

The Towers

The dominating structures of Eleven are the two Towers – the north tower and the south tower. Each floor of the towers is split into two apartments – one harbour facing and one beach facing.

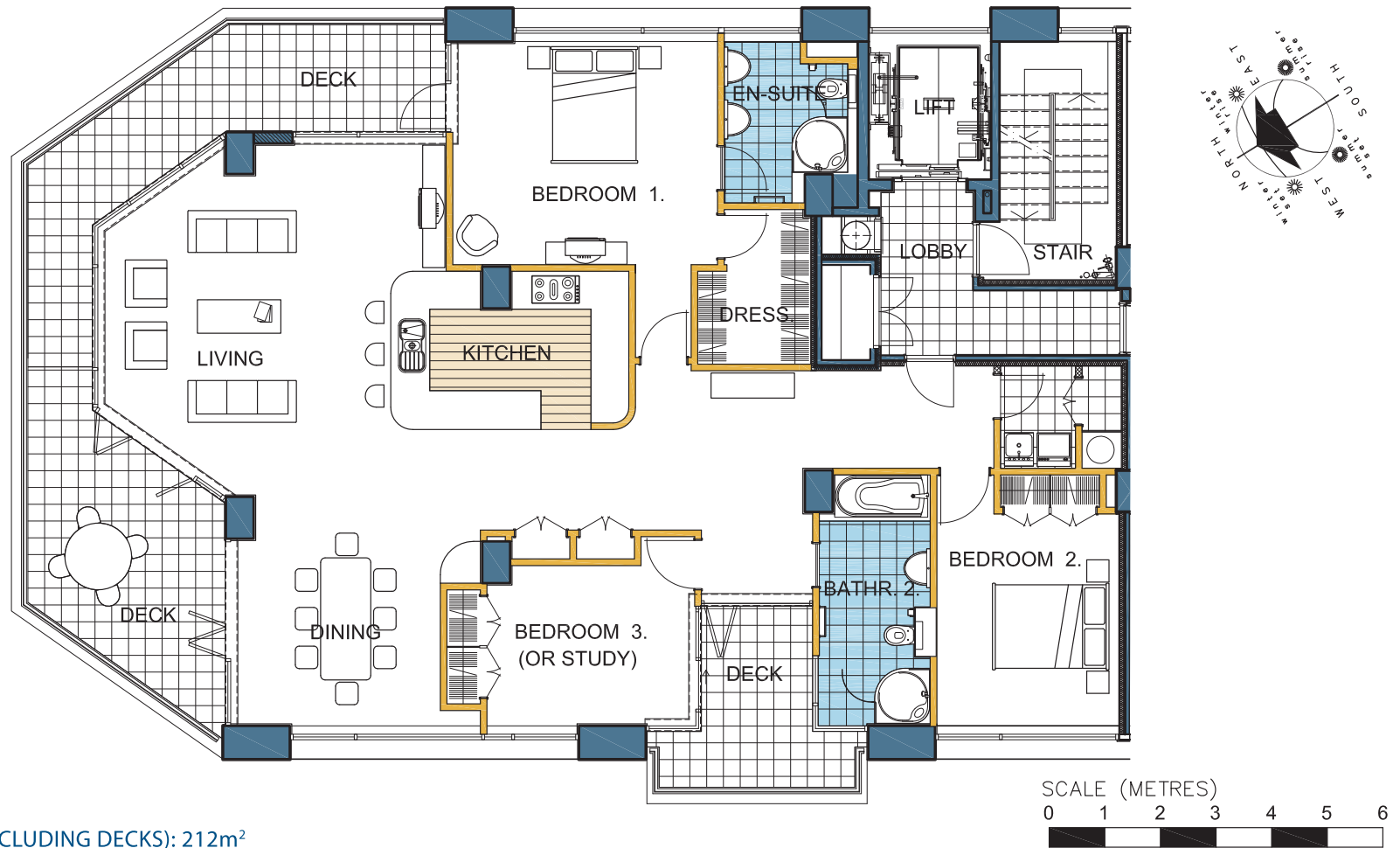
The Harbour View Tower apartments capture fabulous views of Tauranga harbour. Take in the activity at the Port during the day, watch the sun set over the hills and then enjoy the lights of the city at night. And if you step out onto the deck, clever cantilevered balconies allow for views out over Mount Maunganui beach.

The Beach View Tower apartments offer breathtaking views of the Pacific Ocean sprawling away from the white sands of Mount Maunganui beach. Three bedroom and two bathroom options are available.

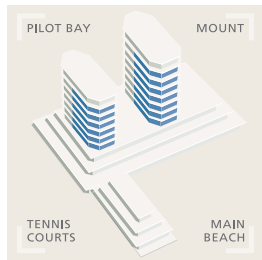
Carpark allocation ranges from two to four parks per apartment and access is via a European glass elevator allowing the excitement to build on the way up!

See next page for floor plans.

The Towers



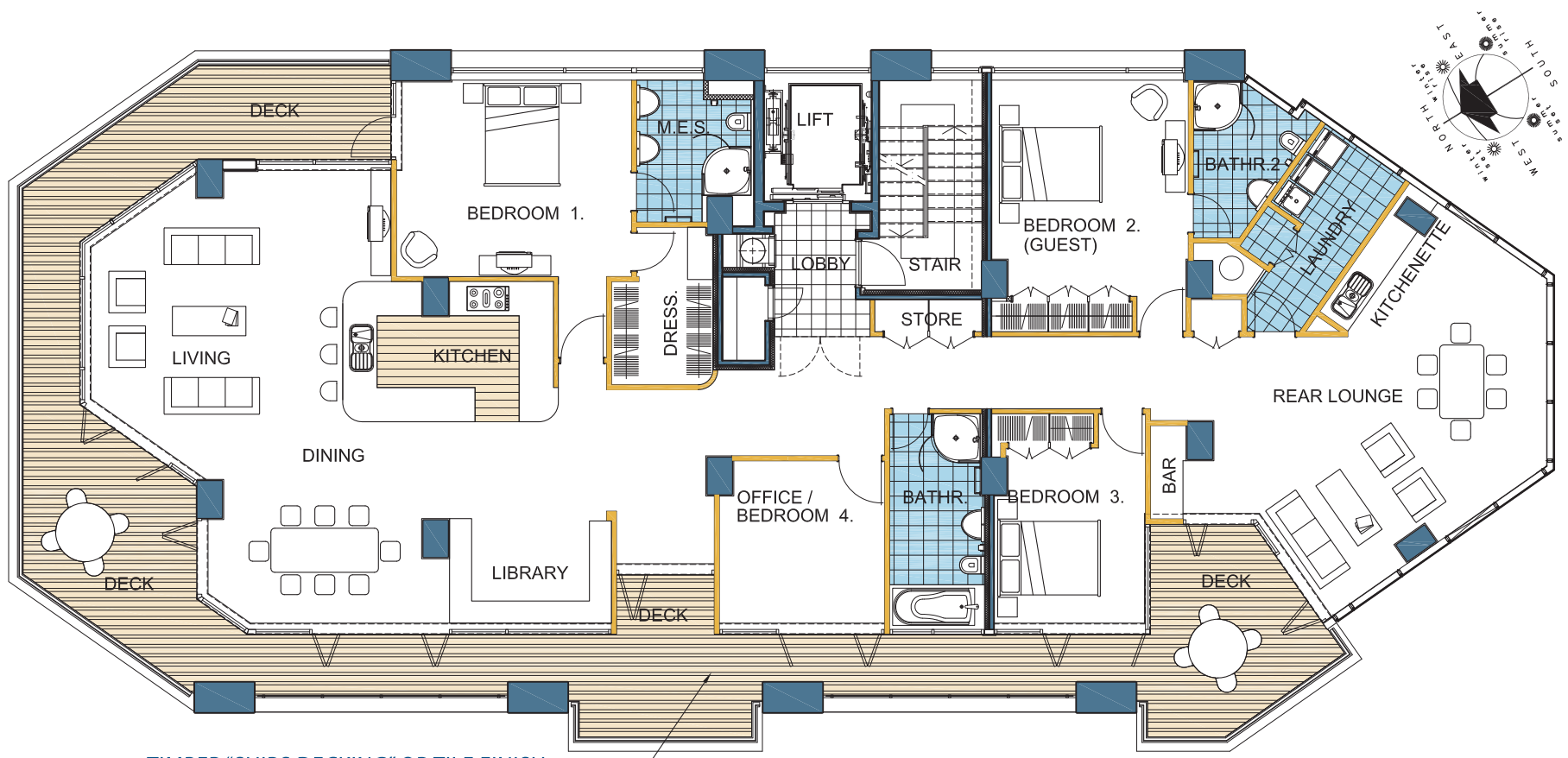
TOTAL UNIT AREA (INCLUDING DECKS): 212m²



FEATURES:

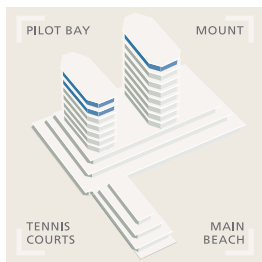
- Spacious open-plan dining and living areas
- Large deck with multiple entry points including access from the master bedroom.
- A bonus deck on the western frontage
- Selected imported Italian kitchen with granite bench
- Three double bedrooms
- Two bathrooms, including one master en-suite bathroom
- Full walk-in laundry
- Private lobby on your level accessed only by you and one other neighbour

The Towers - North Tower Penthouse



TIMBER "SHIPS DECKING" OR TILE FINISH

INTERNAL UNIT AREA: 253m² AREA OF DECKS: 82m²



FEATURES:

- Large open plan dining and living areas
- Private lobby on your level that can only be accessed by you or your friends and family using a personal swipe card
- Wrap-around deck with multiple entry points and extensive views
- Eight car parks in secure basement

- Selected imported Italian kitchen with granite bench and kitchenette to side of rear lounge
- Four double bedrooms with office option
- Full walk-in laundry
- Library
- Coffered ceiling details to dining, living and rear lounge areas